

ARTWORK LOCATIONS



Art location 1-
Middle Branch Trail,
corner of Potee St
and Reedbird Ave



Art location 2-
3601 Hanover St.
New GBA offices



Art location 3-
5 way intersection at
Potee St and Ritchie
Hwy

DESIGN INSPIRATION

After our first community meeting, I knew I wanted to incorporate a symbol that could tie the Brooklyn community together. Divided from the rest of Baltimore by the Patapsco river, I thought about how to turn this seemingly negative into a positive. A simple squiggle, signifying the water that separates the community but also makes it unique, was the starting point for the sculpture designs.



Patapsco River



Water Squiggle



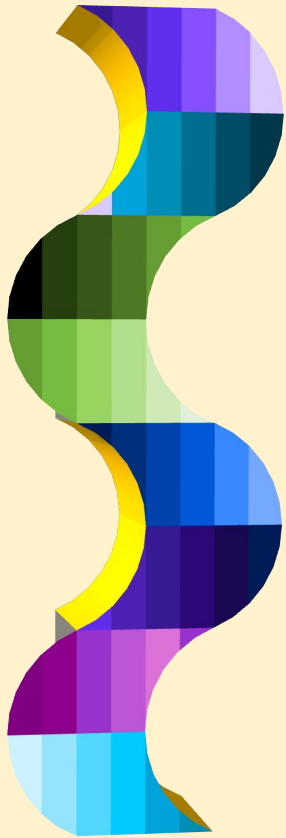
Shade Awning Artwork

Middle Branch Trailhead: Potee St and Reedbird Ave



**ARTWORK
LOCATION 1**





Opportunity for community mosaic



By adding signage or maps for Middle branch trail, sculpture can be a way finding marker



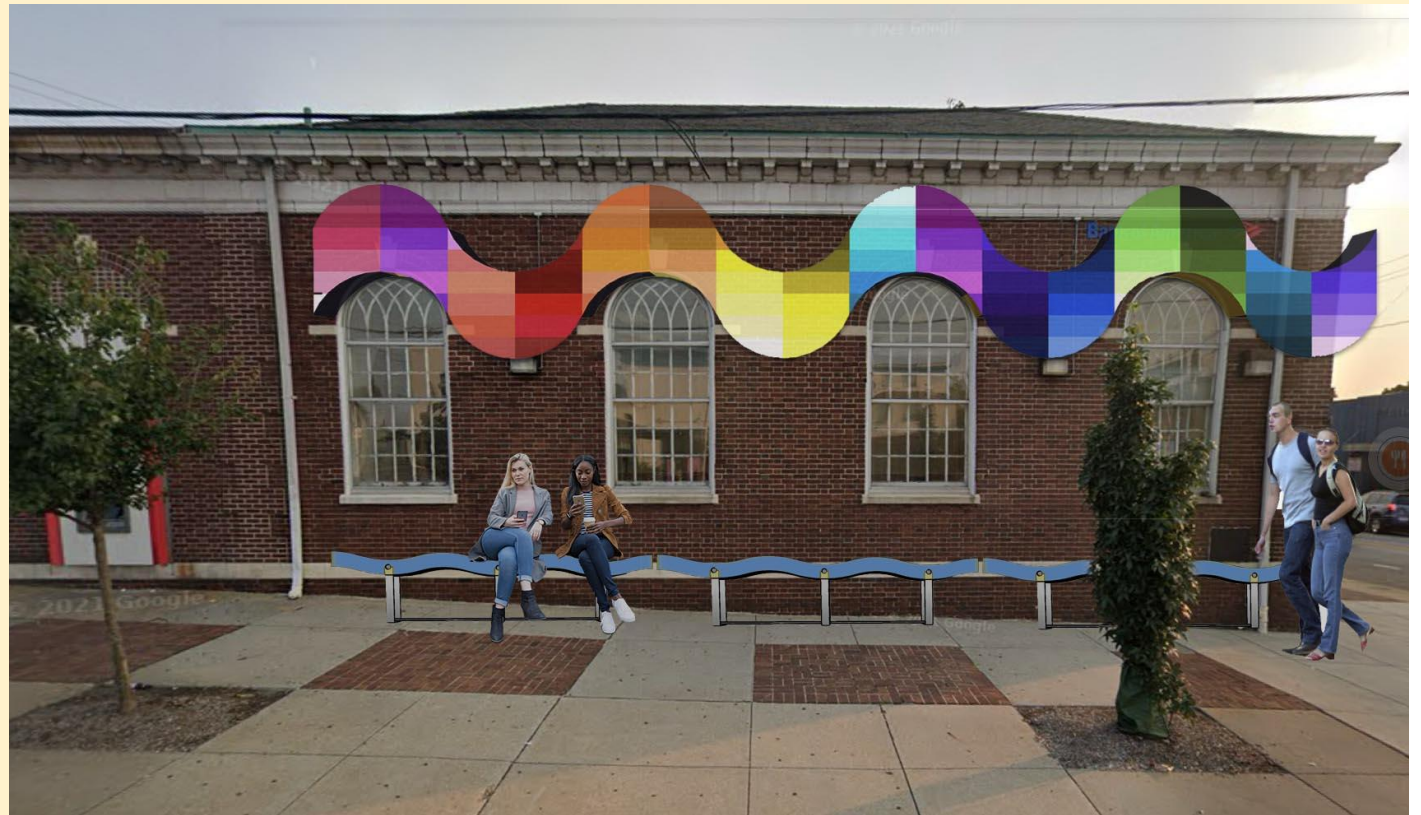
Amenities like bike tools can be incorporated



Corner of Hanover St. and Patapsco Ave
(New GBA offices)



**ARTWORK
LOCATION 2**



The wave bench and awning provide shade and seating to the busy intersection of Hanover St and Patapsco Ave.

This is the midpoint of the three art pieces, so the cool colors from the location 1 and warm colors from location 3 meet and merge into a kaleidoscopic celebration of community.

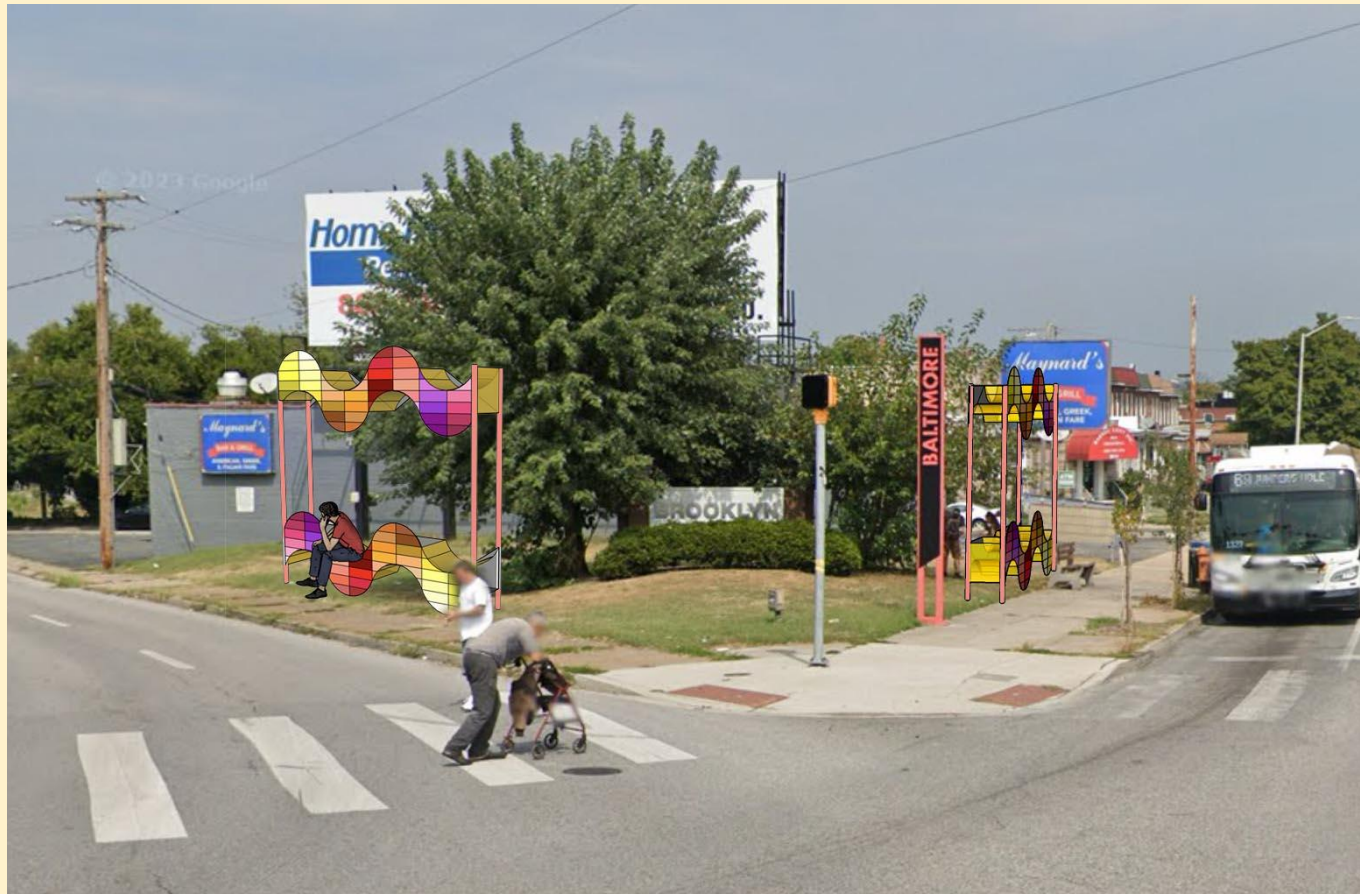
The artwork also announces the new GBA offices as a hub of engagement in Brooklyn.



Intersection of Hanover and Ritchie Hwy



**ARTWORK
LOCATION 3**



This location was cited by many in the July engagement event as a place they pass by or walk through daily. The benches provide practical amenities like seating and cover fo the bus stop as well as a strong visual presence to help with traffic calming.

Colors compliment the existing Baltimore marker to create a stronger gateway identity.

Benches could incorporate things like solar power lighting and wifi so pedestrians can charge their phones while waiting for the bus.



Bench with integrated lighting



Solar wifi bench in Station North made by Openworks and Central Baltimore Partnership